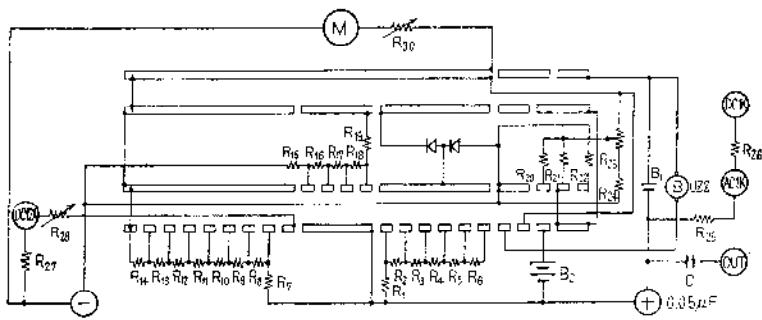


The meter is heavily damped to prevent damage to the movement.

SCHEMATIC DIAGRAM



PARTS LIST

R 1	26.5K	ohm	R 15	1	ohm
R 2	97.5K		R 16	9	ohm
R 3	195 K		R 17	90	ohm
R 4	975 M		R 18	9.9 K	
R 5	1.95M		R 19	5 K	pot
R 6	3.25M		★ R 20	300 K	
R 7	6.2 K		★ R 21	27 K	
R 8	22.5K		★ R 22	340	ohm
R 9	45 K		R 23	10 K	pot
R 10	225 K		★ R 24	20 K	
R 11	450 K		R 25	6.5 M	
R 12	2.25M		R 26	8.5 M	
R 13	4.5 M		R 27	0.025	ohm
R 14	7.5 M		R 28	5 K	

M Meter, 33 DC microamps f. s.
 RECT Rectifier
 BUZ Buzzer
 C 0.05μF, 600 WVDC
 B1 1.5V Battery: Burgess Z, Eveready 912, etc.
 B2 15 V Battery: Burgess Y10, Eveready 501, etc.